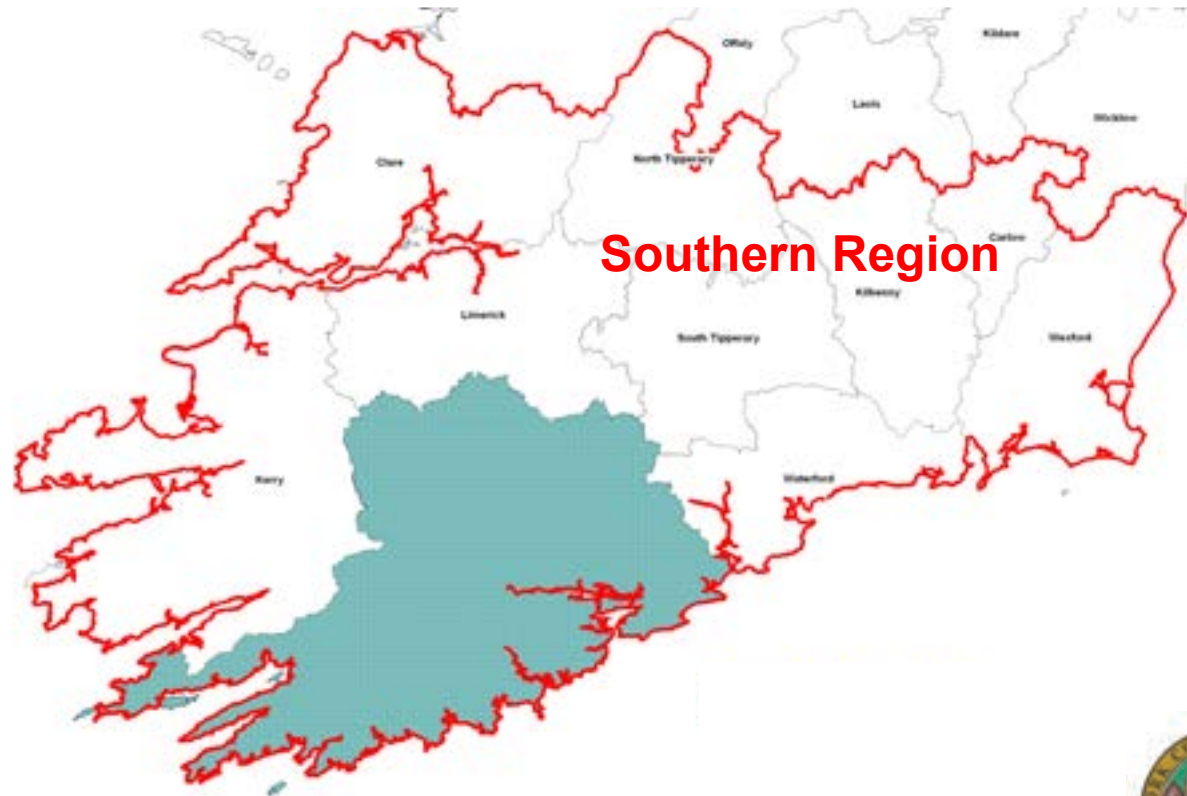


Waste Enforcement Regional Lead Authority The Southern Region



**Comhairle Chontae Chorcaí
Cork County Council**



Too Many Chiefs

- DECLG
- EPA
- NWCPO
- NTFSO
- RWMPO's
- Multiple primary LA's
(County Councils + City Councils)



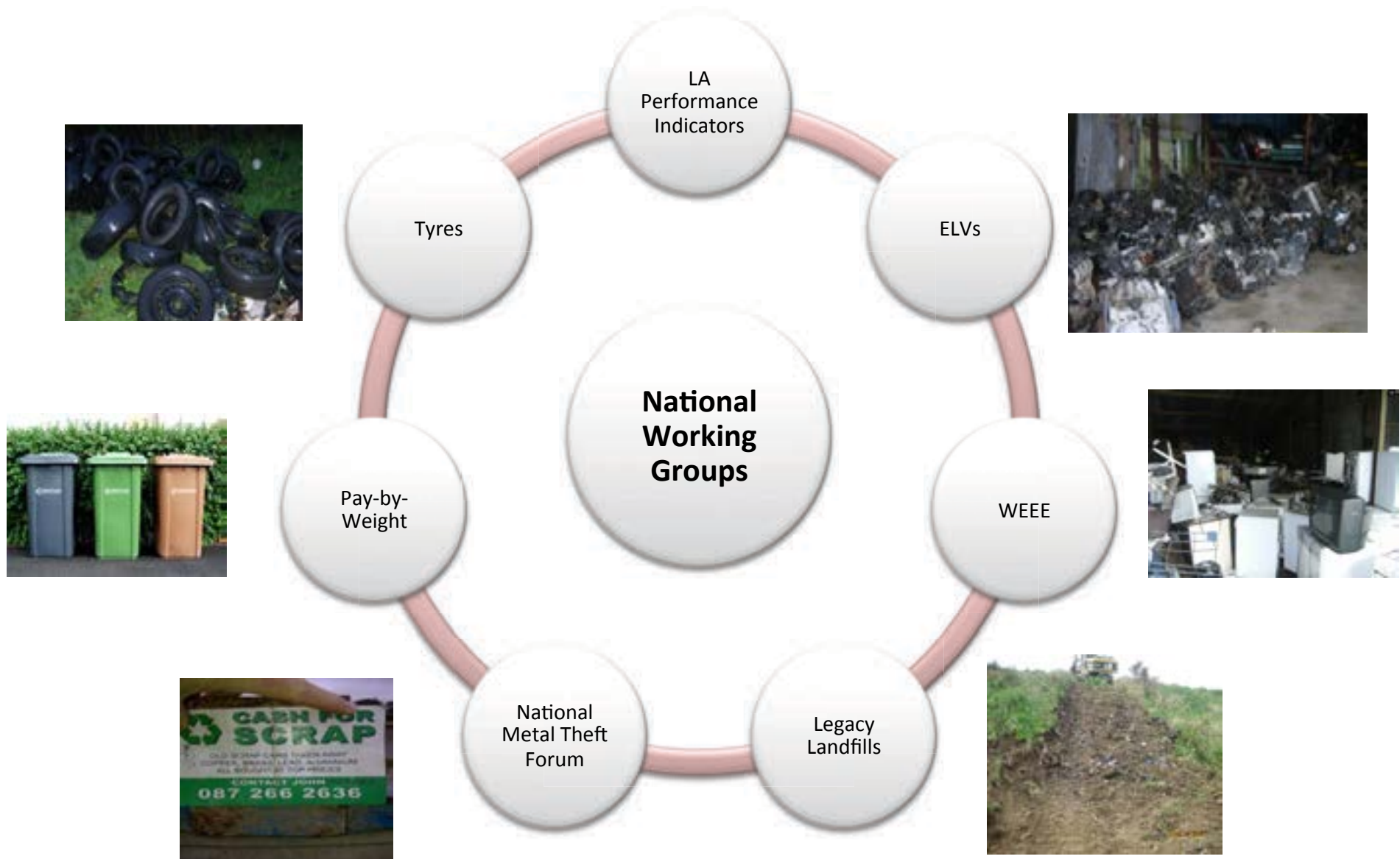


Not Just Another Layer of Bureaucracy





Knowledge Sharing





Focus on Outcomes

- We tended to organize our inspections around failures rather than around opportunities for intervention [prevention].





Risk Based Approach to Enforcement

- Analyse Patterns of Noncompliance
- Identify the Best Time for intervention
- Coordinated Approach
 - Multi-Agency
- Not Just prosecution





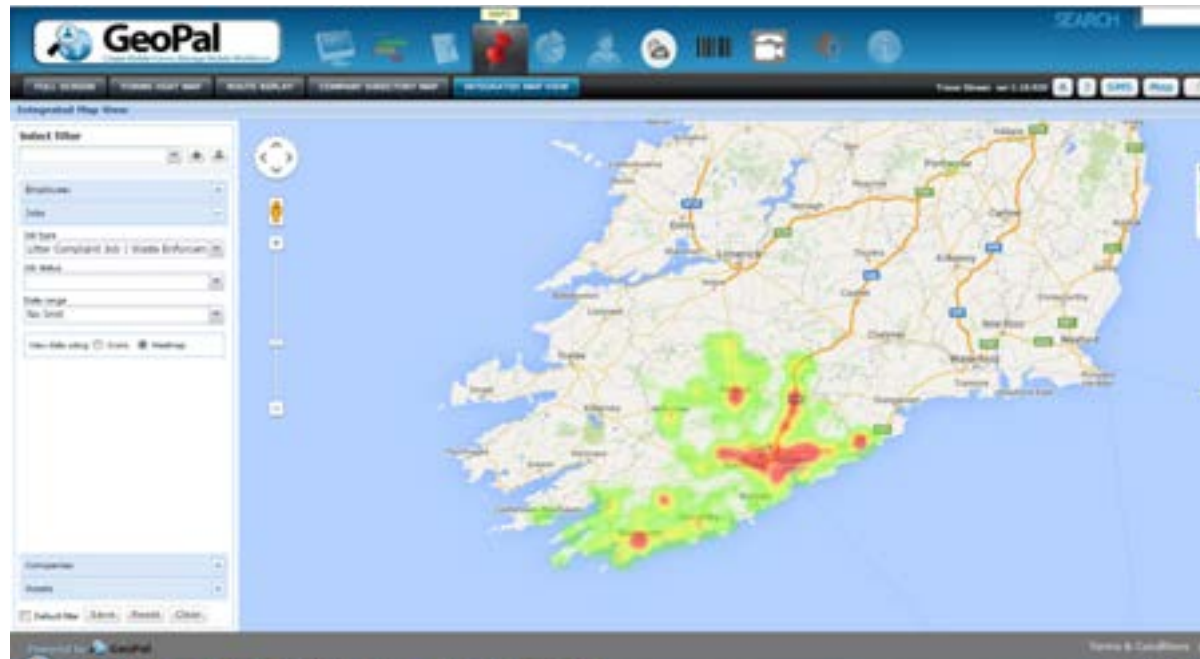
Risk Based Approach to Enforcement

ICT

Mobile Workforce Management

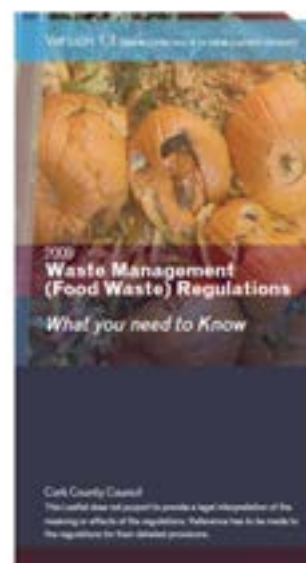
GEOPAL

1. Cloud-based mobile system
 1. Mobile forms
 2. Scheduling Jobs
 3. Dispatching Jobs
 4. Accurate Reports in the field.
 1. Photos
 2. GPS
 3. Signatures
 4. Etc
 5. Generate Reports
 6. Identify Black spots
2. Additional personnel can be added very easily through the web management system





Education and Awareness





Legal Sanctions



Education & Awareness



Notice under Sec 55 WMA

Warrants / Orders in the High Court / Landfill Levy / Actions under Sec 56

Man dumped 1,000 tyres in Cork forest

By Liam Whelan

A 1,000-tyre dumpsite was discovered in a forest at Enchicahill in Co. Cork on Tuesday, a massive illegal pile of waste including tyres and household waste.

Timmy Gleeson, 49, of Ballynaha, Co. Cork, is a member of the public who reported the illegal dumpsite to the local authority. The local authority is currently investigating the matter.



Some of the tyres dumped by Timmy Gleeson at a forest in Enchicahill, Co. Cork.

Cork County Council, and a complaint was made by a farmer neighbouring the forest that tyres were being dumped there. "We felt the problem in Enchicahill was not just a local one but a regional one. It was established that the tyres, which cause a car registration number, had come from cars in the Mexico and Germany area."



Direction under Sec 14 WMA / actions under Sec 14 to remove risk

Prosecutions – Sec 32, sec 34, Sec 39

Director of Public Prosecutions





Intelligence Led Multi-agency Multi-Regional Operations

- Multi-Regional Multi-Agency VCPs to monitor the movement of waste between different counties in a coordinated and consistent manner





Intelligence Led Multi-agency Approach

NPWS



DAFM





Emerging Challenges

- Household Waste Collection Regime
 - Pay-By-Weight
 - Brown Bin
- C&D Waste
- PRI review
- Retention of Trained Staff



WERLA – Southern Region

(1 year on)

- Standardised
 - SOPs / FPNs
 - Case Management System & Prosecution Workflow
- Knowledge Gap closed
- Interagency relationships established
- Consistency



Thank You